

**Composição**

100% PET FR Reciclado
As propriedades ignífugas são intrínsecas à fibra

Peso

890 ± 5% g/ml
635 ± 5% g/m²

Largura

140 ± 2% cm

Resistência à abrasão (Martindale)

UNI EN ISO 12947/2 (12 kPa)
50.000 ± 10% ciclos

Borboto

UNI EN ISO 12945/2
5 (foto standard)
Tolerância: de 4 a 5

Solidez à luz

UNI EN ISO 105-B02
6 (escala de azuis)
Tolerância: de 5 a 8

Solidez à fricção

UNI EN ISO 105-X12
4/5 (escala de cinzentos)
Tolerância: de 4 a 5

Classe ignífuga

UNI 9175 Class 11M
BS 5852 Crib 5
EN 1021-1
EN 1021-2
BS 7176 Medium Hazard
California TB117

O grau de resistência ao fogo depende da espuma utilizada

Cor

Poderão existir variações de cor entre os diferentes lotes dentro do padrão estabelecido comercialmente

Manutenção e limpeza**Garantia**

De acordo com termos e condições de garantia de fábrica.

Composition

100% Recycled PET FR
The flame retardant properties are inherent to the fibre

Weight

890 ± 5% g/ml
635 ± 5% g/m²

Width

140 ± 2% cm

Abrasion resistance (Martindale)

UNI EN ISO 12947/2 (12 kPa)
50.000 ± 10% rubs

Pilling

UNI EN ISO 12945/2
5 (standard photos)
Tolerance: from 4 to 5

Light fastness

UNI EN ISO 105-B02
6 (blue scale)
Tolerance: from 5 to 8

Fastness to rubbing

UNI EN ISO 105-X12
4/5 (grey scale)
Tolerance: from 4 to 5

Flammability

UNI 9175 Class 11M
BS 5852 Crib 5
EN 1021-1
EN 1021-2
BS 7176 Medium Hazard
California TB117

Flame retardant performance is dependant upon the foam used

Colour

Batch to batch colour variations may occur within commercial tolerances

Cleaning and washing**Guarantee**

According to the factory's terms and conditions of guarantee.

Composition

100% PET FR Recyclé
La qualité ininflammable est une caractéristique de la fibre

Poids

890 ± 5% g/ml
635 ± 5% g/m²

Largeur

140 ± 2% cm

Résistance à l'abrasion (Martindale)

UNI EN ISO 12947/2 (12 kPa)
50.000 ± 10% tours

Pilling

UNI EN ISO 12945/2
5 (photos standard)
Tolérance: de 4 à 5

Solidité à la lumière

UNI EN ISO 105-B02
6 (échelle des bleu)
Tolérance: de 5 à 8

Solidité au frottement

UNI EN ISO 105-X12
4/5 (échelle des gris)
Tolérance: de 4 à 5

Classement au feu

UNI 9175 Class 11M
BS 5852 Crib 5
EN 1021-1
EN 1021-2
BS 7176 Medium Hazard
California TB117

Performance de flammabilité dépend de la mousse utilisée

Coloris

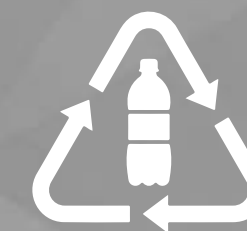
Légères différences de couleur entre un lot et l'autre peuvent se manifester dans les tolérances commerciales

Entretien et nettoyage**Garantie**

Selon les termes et les conditions de garantie de fabrication.



carlos natal
revestimentos para mobiliário



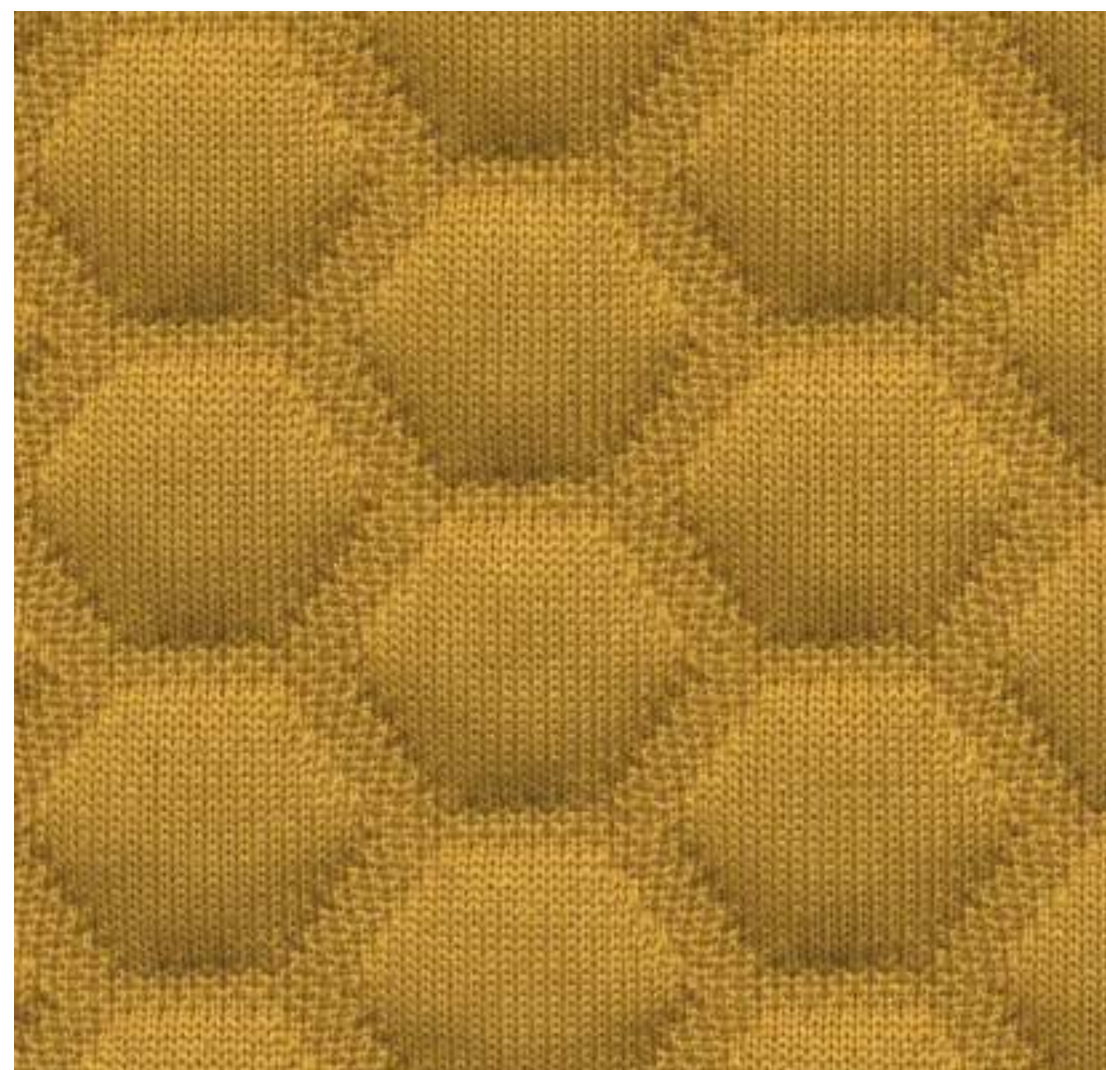
100% PET FR
RECYCLED FROM BOTTLES

SPAZIO

Colecção Tecidos Ignífugos

Fire Retardant Fabrics Collection
Collection Tissus Ignifuges

SPAZIO



01197004



01197002



01197001



01197003



01197005



01197013



01197012



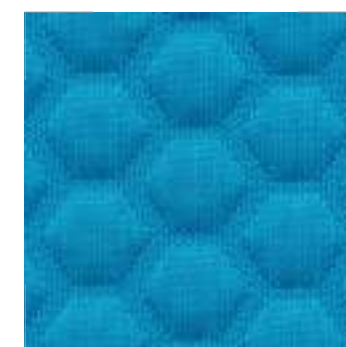
01197011



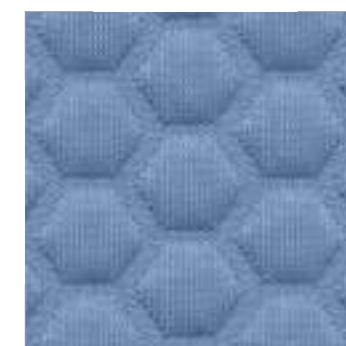
01197010



01197006



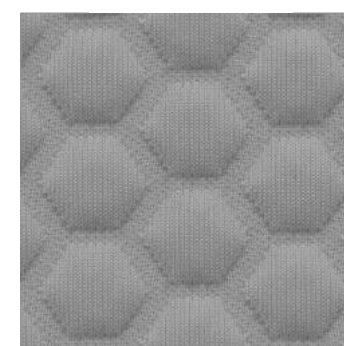
01197009



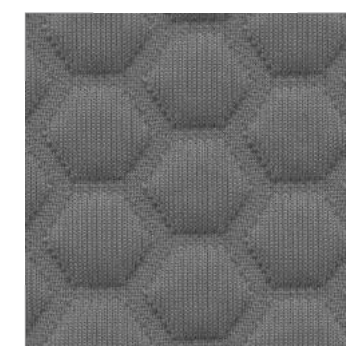
01197008



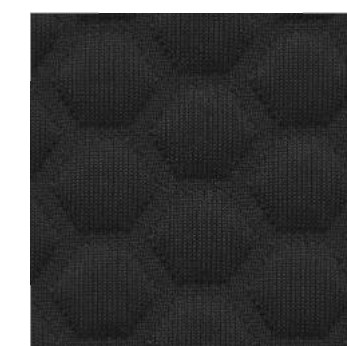
01197007



01197014



01197015



01197016