

**Composição**

100% Poliéster - Trevira CS
As propriedades ignífugas são intrínsecas à fibra

Peso

365 ± 5% g/ml
260 ± 5% g/m²

Largura

140 ± 2% cm

Resistência à abrasão (Martindale)

UNI EN ISO 12947/2
70.000 ± 10% ciclos

Borboto

UNI EN ISO 12945/2
5 (foto standard)
Tolerância: de 4 a 5

Solidez à luz

UNI EN ISO 105-B02
6 (escala de azuis)
Tolerância: de 5 a 8

Solidez à fricção

UNI EN ISO 105-X12
4/5 (escala de cinzentos)
Tolerância: de 4 a 5

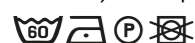
Classe ignífuga

UNI 9174-8456 Class C1
DIN 4102 Class B1
NF 92501-7 Class M1
BS 5852 Crib 5
EN 1021-1
EN 1021-2
IMO Res. A 652 (16) Part 8
IMO Res. A 471 (XII) Part 7
BS 7176 Medium Hazard
NF D 60013 Class AM 18

O grau de resistência ao fogo depende da espuma utilizada

Cor

Poderão existir variações de cor entre os diferentes lotes dentro do padrão estabelecido comercialmente

Manutenção e limpeza**Garantia**

De acordo com termos e condições de garantia de fábrica.

Composition

100% Polyester - Trevira CS
The flame retardant properties are inherent to the fibre

Weight

365 ± 5% g/ml
260 ± 5% g/m²

Width

140 ± 2% cm

Abrasion resistance (Martindale)

UNI EN ISO 12947/2
70.000 ± 10% rubs

Pilling

UNI EN ISO 12945/2
5 (standard photos)
Tolerance: from 4 to 5

Light fastness

UNI EN ISO 105-B02
6 (blue scale)
Tolerance: from 5 to 8

Fastness to rubbing

UNI EN ISO 105-X12
4/5 (grey scale)
Tolerance: from 4 to 5

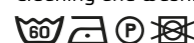
Flammability

UNI 9174-8456 Class C1
DIN 4102 Class B1
NF 92501-7 Class M1
BS 5852 Crib 5
EN 1021-1
EN 1021-2
IMO Res. A 652 (16) Part 8
IMO Res. A 471 (XII) Part 7
BS 7176 Medium Hazard
NF D 60013 Class AM 18

Flame retardant performance is dependant upon the foam used

Colour

Batch to batch colour variations may occur within commercial tolerances

Cleaning and washing**Guarantee**

According to the factory's terms and conditions of guarantee.

Composition

100% Polyestere - Trevira CS
La qualité ininflammable est une caractéristique de la fibre

Poids

365 ± 5% g/ml
260 ± 5% g/m²

Largeur

140 ± 2% cm

Résistance à l'abrasion (Martindale)

UNI EN ISO 12947/2
70.000 ± 10% tours

Pilling

UNI EN ISO 12945/2
5 (photos standard)
Tolérance: de 4 à 5

Solidité à la lumière

UNI EN ISO 105-B02
6 (échelle des bleus)
Tolérance: de 5 à 8

Solidité au frottement

UNI EN ISO 105-X12
4/5 (échelle des gris)
Tolérance: de 4 à 5

Classement au feu

UNI 9174-8456 Class C1
DIN 4102 Class B1
NF 92501-7 Class M1
BS 5852 Crib 5
EN 1021-1
EN 1021-2
IMO Res. A 652 (16) Part 8
IMO Res. A 471 (XII) Part 7
BS 7176 Medium Hazard
NF D 60013 Class AM 18

Performance de flammabilité dépend de la mousse utilisée

Coloris

Légères différences de couleur entre un lot et l'autre peuvent se manifester dans les tolérances commerciales

Entretien et nettoyage**Garantie**

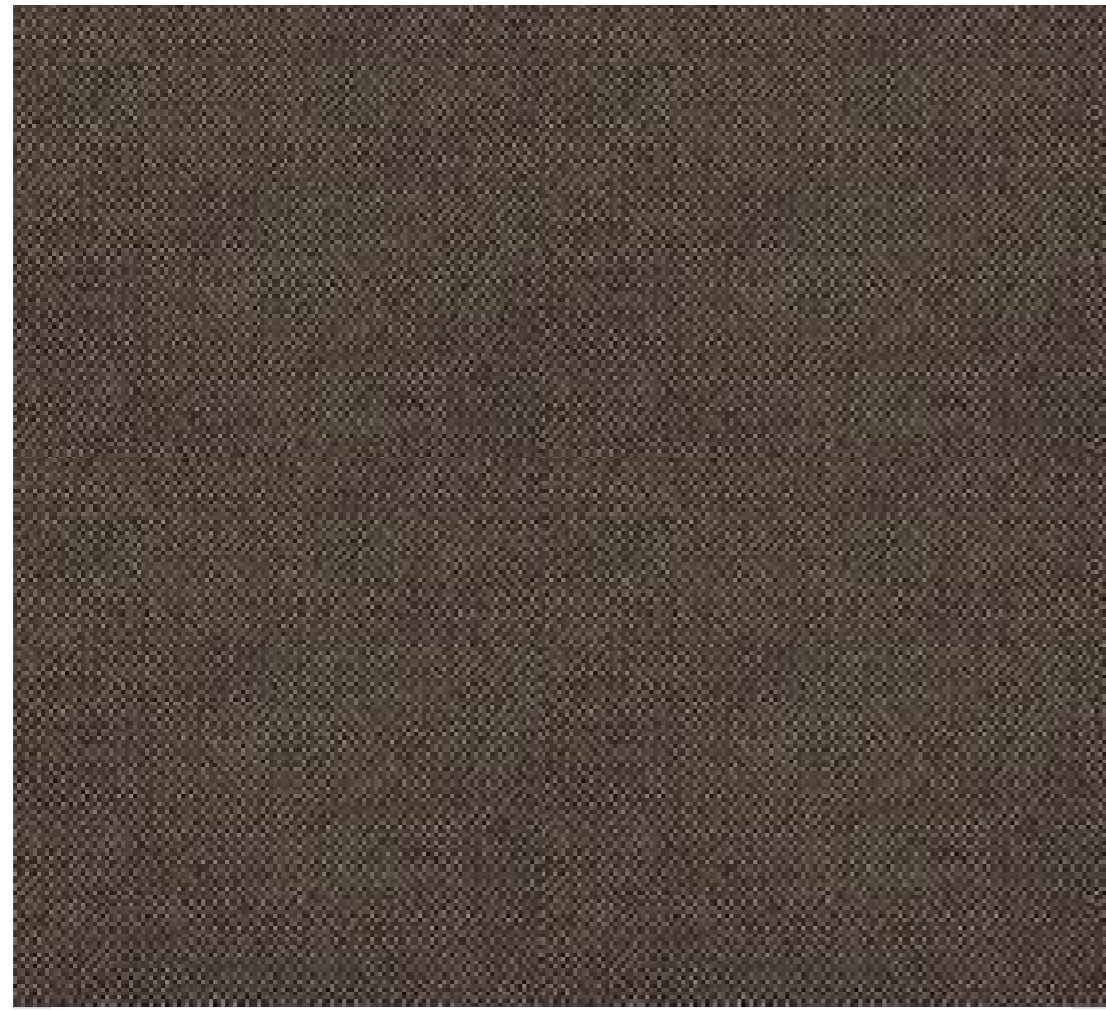
Selon les termes et les conditions de garantie de fabrication.

LISBOA

Coleção Trevira CS

Trevira CS Collection
Collection Trevira CS

LISBOA Treviso CS



01146008



01146019



01146023



01146022



01146021



01146020



01146024



01146018



01146017



01146015



01146016



01146011



01146010



01146009



01146001



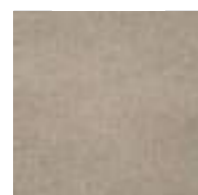
01146012



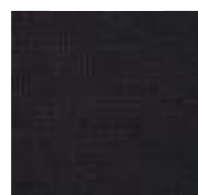
01146013



01146014



01146007



01146006



01146003



01146002



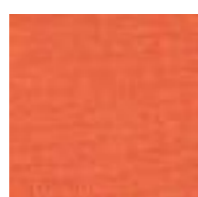
01146027



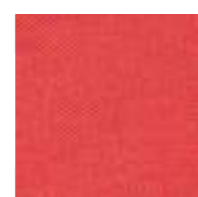
01146026



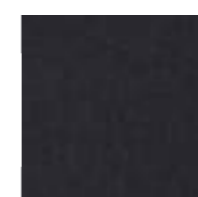
01146025



01146005



01146004



01146029



01146028