

COLEÇÃO
HOSPITALITY

COLLECTION
HOSPITALITY

COLLECTION
HOSPITALITY

Equador

PELE SINTÉTICA
PARA CONTRACT

COATED FABRIC FOR
THE CONTRACT MARKET

TISSU ENDUIT
POUR COLLECTIVITÉS

ASPECTO PELE NATURAL

LEATHER LOOK

ASPECT CUIR



Hotelaria
Hotel
Hospitalité



Restauração
Restaurant
Restaurant



Escritórios
Office
Bureau



Hospital
Hospital
Hôpital

carlos natal.
feeling beyond quality

Composição | Composition | Composition 66% PVC | 11% PU | 23% PES
Peso | Weight | Poids 610 g/m² ± 5%
Largura | Width | Laize 140cm ± 2 cm
Comprimento das peças | Roll length | Longueur des pièces 40 mL
Espessura | Thickness | Épaisseur 1,00 mm ± 0,10 mm



carlos natal.
feeling beyond quality



Classe ignifuga
Flammability
Classement de feu

EN 1021-1 (cigarro | cigarette | cigarette) | EN 1021-2 (chama | flame | Flame)
BS 5852 Part 0 | BS 5852 Part 1
IMO Part 8 Upholstery



Abrasão Martindale
Martindale abrasion
Abrasion martindale

ISO 5470-2 (12kPa)
Nº de ciclos | Nº of Cycles | Nº de Cycles: >100.000
Nível de Resistência | Resistance Level | Niveau de Résistance: Class A



Resistência cor à luz
Colour fastness to artificial light
Tenue à la lumière

ISO 105 B02: 7/8



Antibacteriano
Antibacterial
Antibactérien

ISO 22196
Taxa de inibição | Inhibition rate | Taux d'inhibition: >99,9%
Sem crescimento bacteriano | No bacterial growth | Pas de croissance bactérienne



Certificado Sanitário HZ/C/00558/11 para estofa
Health Quality Certificate HZ/C/00558/11 for upholstered furniture
Certificat Sanitaire HZ/C/00558/11 pour le rembourrage



SVHC 155 químicos, regulamento (EC) nº 1907/2006
SVHC 155 chemicals, regulation (EC) nº 1907/2006
SVHC 155 chimiques, réglementation (EC) nº 1907/2006



Ausência de Azo-Compostos, Ftalatos e DMF
Absence of azo compounds, phtalates and DMF
Absence de composés azoïques, les phtalates et le DMF



Resistência à Hidrólise
Hydrolysis resistant
Résistant à l'hydrolyse



Conforto e leveza
Comfort and lightness
Confort et légèreté



Impermeável à água
Waterproof fabric
Imperméabilité à l'eau



Poderão existir pequenas variações de cores entre os diferentes lotes.
Batch to batch variations may occur within commercial tolerances.
Des variations tolerables de coloris d'un bain á outre peuvent se manifester.



Longevidade
Long lasting
Longévité



Quimicamente Inerte
Chemically Inert
Chimiquement Inerte

LIMPEZA | CLEANING | NETTOYAGE

Uma limpeza regular é fundamental para preservar a aparência dos tecidos e prolongar a sua vida útil.
Limpeza normal: aspirar regularmente com força média, de preferência semanalmente. Para remover manchas não gordurosas limpar com um pano sem pêlos ou uma esponja humedecidos com água morna.
Atenção: não esfregar fortemente os tecidos para evitar a perda de cores.

Regular cleaning is important in order to keep the upholstery looking its best and to prolong its life.
Normal cleaning: vacuum frequently on medium power, ideally every week. Remove non-greasy stains by carefully dabbing with a lint-free cloth or sponge wrung out in clean warm water.
Be careful: do not rub the material too hard because this could result in loss of colour.

Un nettoyage régulier et important si l'on souhaite préserver l'apparence du tissu d'ameublement et allonger sa durée de vie.
Nettoyage ordinaire: nettoyer régulièrement à l'aspirateur (éventuellement à puissance réduite), de préférence une fois par semaine. Pour enlever une tache non grasse, tremper dans de l'eau chaude un chiffon propre non pelucheux, ou une éponge, essorer et frotter doucement.
Attention: ne pas frotter trop fort le tissu, cela pourrait occasionner un blanchiment.

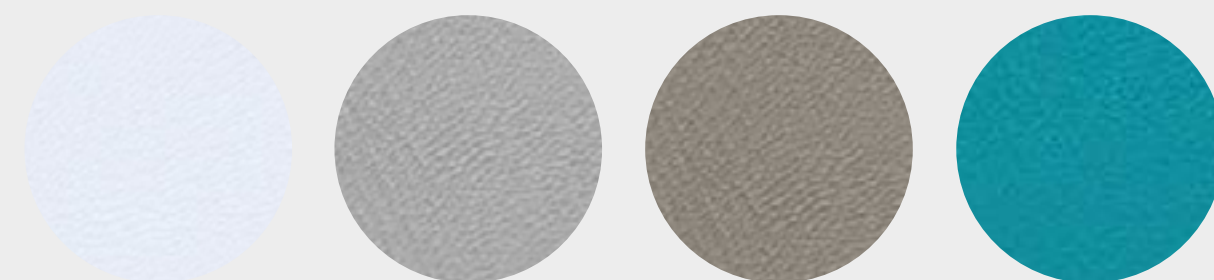
Carlos Natal, lda | Parque Empresarial do Casarão - Avenida das Ferragens, 87
3750-860 Águeda | Portugal
+351 234 622 114 | comercial@carlosnatal.pt | www.carlosnatal.pt

Equador

Pele Sintética
Coated Fabric | Tissu Enduit



MINT 01032016

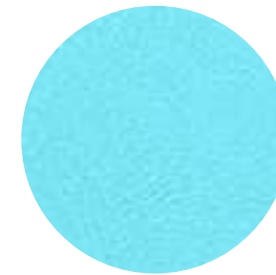


COTTON
01032002

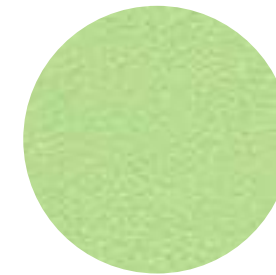
SILVER
01032005

KHAKI
01032006

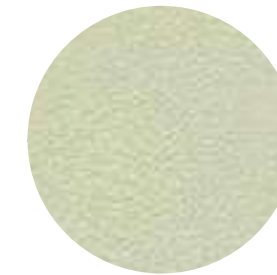
TEAL
01032015



CELESTE
01032012



PISTACHIO
01032010



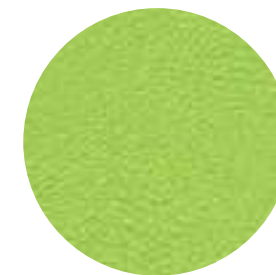
VANILLA
01032004



LAVENDER
01032023



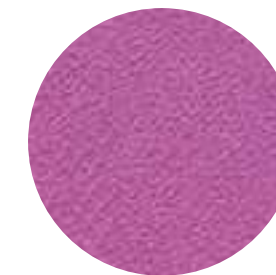
MAYA
01032013



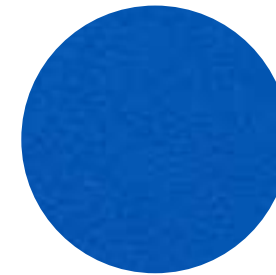
SPRING
01032011



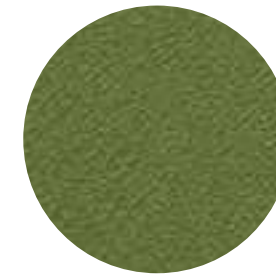
CREAM
01032003



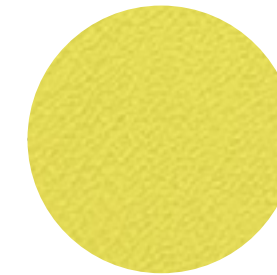
ORCHID
01032025



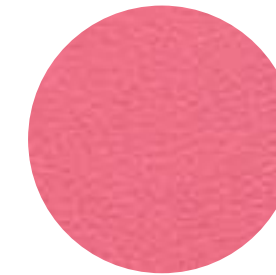
ROYAL
01032014



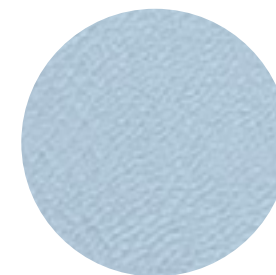
OLIVE
01032017



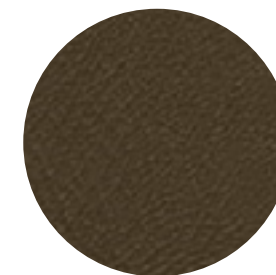
MAIZE
01032022



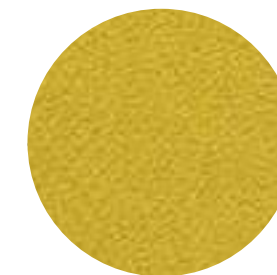
ROSE
01032024



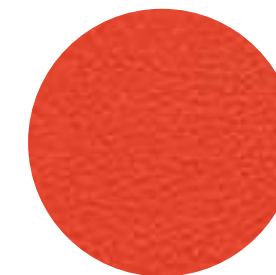
CLOUD
01032007



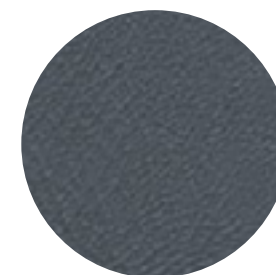
COFFEE
01032009



GOLD
01032021



FLAME
01032019



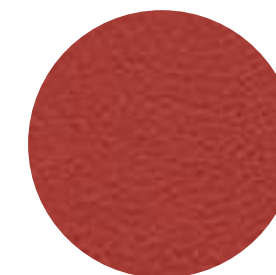
ASH
01032008



CHARCOAL
01032001



PUMPKIN
01032020



CARMINE
01032018