

COLEÇÃO
HOSPITALITY

COLLECTION
HOSPITALITY

COLLECTION
HOSPITALITY

Atlantis FR

PELE SINTÉTICA
PARA CONTRACT

SYNTHETIC LEATHER FOR
THE CONTRACT MARKET

TISSU ENDUIT
POUR COLLECTIVITÉS

ASPECTO PELE NATURAL

NATURAL LEATHER LOOK

ASPECT CUIR NATURELLE



Institucional
Institutionnel



Residencial
Home
Residentiel



Hotelaria
Hotel
Hospitalité



Escritórios
Office
Bureau



Restauração
Restaurant
Restaurant

carlos natal®
feeling beyond quality

Composição | Composition | Composition 79% PVC | 21% PES

Peso | Weight | Poids 520 g/m² + 20 g/m²

Largura | Width | Laize 140 cm ± 2 cm

Comprimento das peças | Roll length | Longueur des pièces 40 m

Espessura | Thickness | Épaisseur 0,90 mm ± 0,10 mm


carlos natal®
feeling beyond quality



Classe ignífuga
Flammability
Classement de feu

EN 1021-1 (Cigarro | Cigarette | Cigarette)
EN 1021-2 (Chama | Flame | Flamme)
BS 5852 PART 0
BS5852 PART 1
IMO PART 8 UPHLOSTERY



Abrasão Martindale
Martindale abrasion
Abrasion martindale

EN ISO 12947-2 (12kPa):
Nº de ciclos: 100.000



Resistência cor à luz
Colour fastness to artificial light
Tenue à la lumière

EN ISO 105 B02: > 5



Antibacteriano
Colour fastness to artificial light
Tenue à la lumière

ISO 22196 Taxa de inibição: > 99,9% (sem crescimento bacteriano)
ISO 22196 Inhibition rate: > 99,9% (no bacterial growth)
ISO 22196 Taux d'inhibition: > 99,9% (pas de croissance bactérienne)



Resistência à Hidrólise
Hydrolysis resistant
Résistant à l'hydrolyse



SVHC 155 químicos, regulamento (EC) nº 1907/2006
SVHC 155 chemicals, regulation (EC) nº 1907/2006
SVHC 155 chimiques, réglementation (EC) nº 1907/2006



Ausência de Azo-Compostos, Ftalatos e DMF
Absence of azo compounds, phthalates and DMF
Absence de composés azoïques, les phthalates et le DMF



Impermeável à água
Waterproof fabric
Imperméabilité à l'eau



Longevidade
Long lasting
Longévité



Poderão existir pequenas variações de cores entre os diferentes lotes.
Batch to batch variations may occur within commercial tolerances.
Des variations tolérables de coloris d'un bain à outre peuvent se manifester.

LIMPEZA | CLEANING | NETTOYAGE

Uma limpeza regular é fundamental para preservar a aparência dos tecidos e prolongar a sua vida útil.
Limpeza normal: aspirar regularmente com força média, de preferência semanalmente. Para remover manchas não gordurosas limpar com um pano sem pêlos ou uma esponja humedecidos com água morna.
Atenção: não esfregar fortemente os tecidos para evitar a perda de cores.

Regular cleaning is important in order to keep the upholstery looking its best and to prolong its life.
Normal cleaning: vaccum frequently on medium power, ideally every week. Remove non-greasy stains by carefully dabbing with a lint-free cloth or sponge wrung out in clean warm water.
Be careful: do not rub the material too hard because this could result in loss of colour.

Un nettoyage régulier et important si l'on souhaite préserver l'apparence du tissu d'ameublement et allonger sa durée de vie.
Nettoyage ordinaire: nettoyer régulièrement à l'aspirateur (éventuellement à puissance réduite), de préférence une fois par semaine. Pour enlever une tache non grasse, tremper dans de l'eau chaude un chiffon propre non pelucheux, ou une éponge, essorer et frotter doucement.
Attention: ne pas frotter trop fort le tissu, cela pourrait occasionner un blanchiment.

Carlos Natal, lda | Parque Empresarial do Casarão - Avenida das Ferragens, 87
3750-860 Águeda | Portugal
+351 234 622 114 | comercial@carlosnatal.pt | www.carlosnatal.pt

Atlantis FR

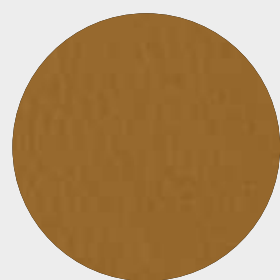
Pelgon
Coated fabric | Tissu enduit



carlos natal®
feeling beyond quality



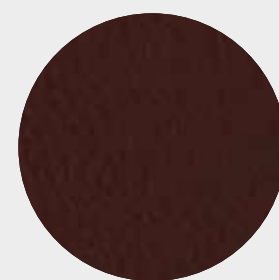
TERRA 01008024



NATURAL
01008020



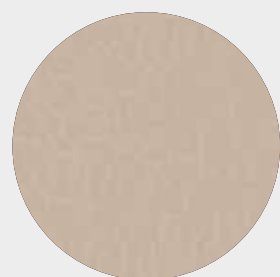
AMÊNDOA
01008025



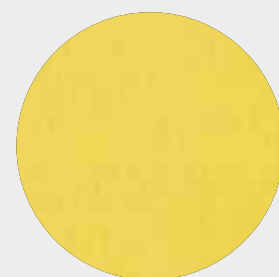
CHOCOLATE
01008009



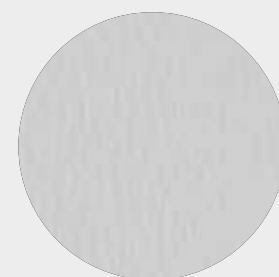
ARGILA
01008021



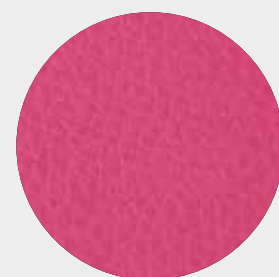
DUNA
01008003



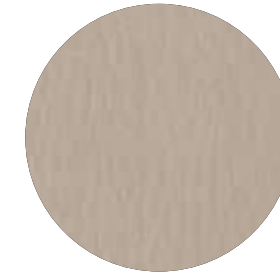
LIMÃO
01008005



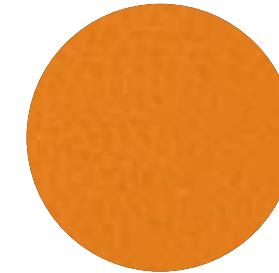
NEVE
01008011



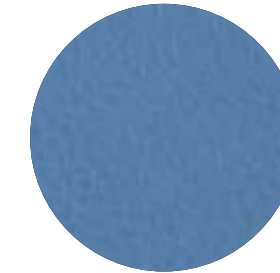
ROSA
01008027



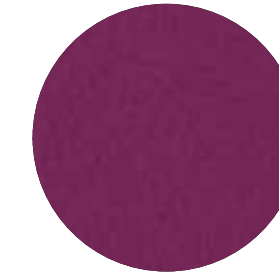
PÉROLA
01008018



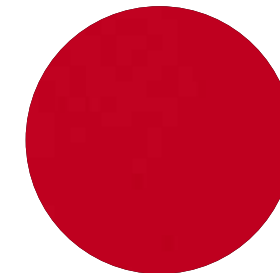
TANGERINA
01008026



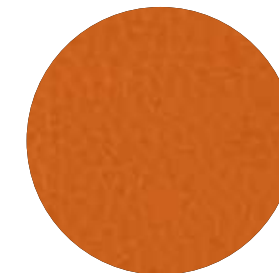
CÉU
01008014



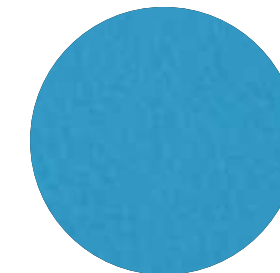
CYCLAME
01008012



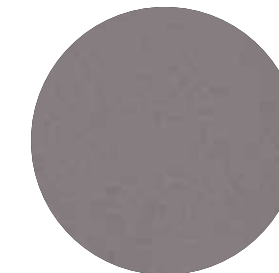
MORANGO
01008004



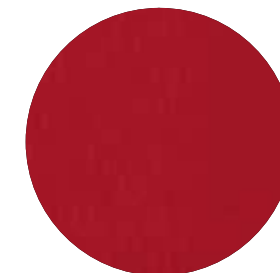
LARANJA
01008010



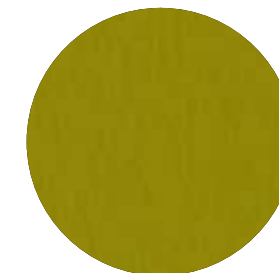
TURQUESA
01008029



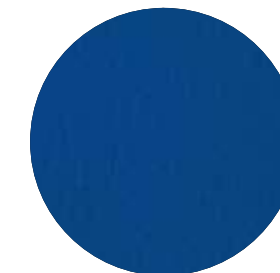
FURACÃO
01008006



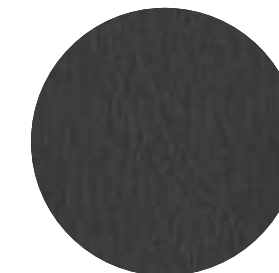
CARMIM
01008023



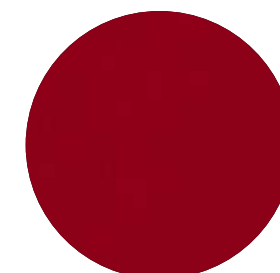
KIWI
01008013



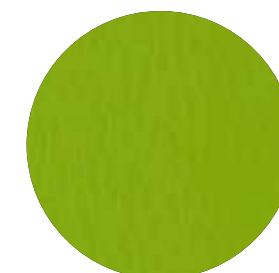
LAGUNA
01008015



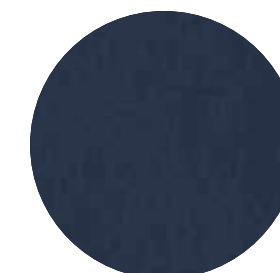
ANTRACITE
01008016



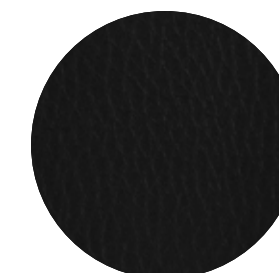
CEREJA
01008017



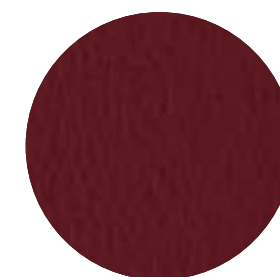
PRIMAVERA
01008028



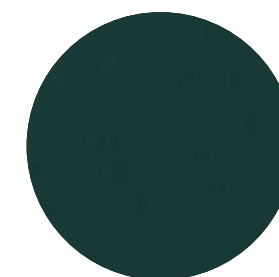
AZURITE
01008002



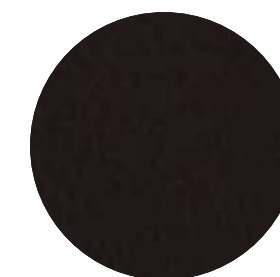
PRETO
01008001



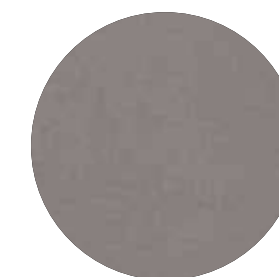
VINHO
01008007



SALSA
01008008



CACAU
01008019



RATO
01008022